

MARCH

Friday 4th Doors open 7.30pm
Show starts 8pm £5 at the door
THE SITUATION presents...

Featuring new band winners at the Staffordshire and Cheshire music awards, *THE GURUS*, fresh from supporting the *Sherlocks*; keep a close eye on this Leek band, destined for bigger things, supported by Pete Roch, and newest band on the scene, the hotly awaited *HOSHI*.

Wednesday 13th 7.30pm Free
VALENTINO'S GHOST Acclaimed film on West's shifting portrayal of Arabs.

Thursday 17th 7.30pm Tickets £10
PENTABUS THEATRE COMPANY in association with SALISBURY PLAYHOUSE present
THIS LAND

An adventurous, thought provoking and thoroughly absorbing new play exploring the impact of fracking on rural areas, its beautifully pitched performances infused with pathos and dark humour. The terrific touring company Pentabus has a good track record of punching above its weight with brand new shows and here, with Salisbury Playhouse, it explores the impact of fracking in the countryside. Looking at the experiences of a young couple living in a rural community when their land is opened up to drilling, 'This Land' digs down through the history - and the future - of a patch of earth and everything that has and will happen there. How much does where you live inform the person you become? And what happens when someone else stakes their claim? A story both local and national, personal and epic by rising young playwright Siân Owen (Oxford Playhouse, Theatre 503, Southwark Playhouse, Sherman Cymru), with Pentabus creatively transforming the familiar surroundings of the Foxlowe into something unexpected.



APRIL

Friday 1st Doors open 7.30pm
Show starts 8.30pm £5 at the door
THE SITUATION presents...

Featuring *STRANGE RIVERS* headlining, having just secured a slot at bearded theory festival, so don't miss them, backed up by *INDIGO*, *CARVELLA*, and *PARKA BURNS*.

Thursday 7th 8pm Tickets £9
FUNHOUSE COMEDY CLUB presents
FOXLOWE COMEDY NIGHT

featuring
MARK MAIER, NOEL, JAMES, ALEX, HYLTON, KEVIN, CASWELL JONES.

Sunday 10th 2-4pm
SEED SWAP

Thursday 21st 7pm
THE THIRD INCREDIBLE ANNUAL
FOXLOWE FASHION SHOW

Saturday 30th Doors open 7.30pm
Tickets £14

LEEK ARTS FESTIVAL COMEDY NIGHT PRESENTS

JEREMY HARDY, BBC Radio 4 News Quiz and various other radio and television shows but still a stand up comedian touring the UK with his one-man stand up show.

Mexican sculptor Abraham Cruzvillegas' Empty Lot is a large geometric sculpture filling the entire Turbine Hall at Tate Modern, created by using scaffolding, a grid of triangular wooden planters, and soil collected from parks across London including Peckham, Haringey and Westminster. Nothing will be planted in the soil, but it will be lit by lamps and watered throughout the six month display. The unpredictable nature of the work, which may grow and change from one week to the next, provokes questions about the city and nature, as well as wider ideas of chance, change, and hope.

LOOKING AHEAD : SUMMER FILM PROGRAMME

Our Summer film programme will start on Tuesday April 12th with Carol, the Todd Hayne's adaptation of a Patricia Highsmith novel, starring Cate Blanchett and Rooney Mara. The programme is currently being finalised, but will include: Grandma, Macbeth, The Danish Girl, Sunset Song, Spotlight, The Program, Trumbo and Bridge of Spies. Once bookings with distributors are finalised, details will be on the Foxlowe website late March.

Foxlowe Cafe & Catering for Private Functions

Welcoming and relaxed ambience Monday-Saturday 10am - 4pm

First Sunday monthly 10am-4pm

Good selection of vegetarian meals and daily meat option.

We cater for all kinds of private parties.

Contact the Centre Manager, Vicki Heath: 01538 386112



The Foxlowe Arts Centre is a Limited Company by Guarantee: 07757326 and a Registered Charity: 1144382
Trustees : Peter Kent-Baguley (chair), Marc Briand, Colin Broome, Andy Norton, Derek Tatton, and Chris Thompson.

ST13 is published by Foxlowe Arts Centre Ltd Market Place Leek ST13 6AD

Produced by Peter Kent-Baguley: 07773 464626 peter@kent-baguley.co.uk

Printed by HCM printers, Strangman Street, Leek. (01538 387275)

NEXT ISSUE: May - June published 1st May 2016

Foxlowe Arts

Centre

Co-ordinators

All co-ordinators are volunteers. Each has a number of volunteers helping with the work.

Volunteers are always welcome at the Foxlowe. However much time you are free to offer your help will be most welcome. Whatever your skills there will be a task to match!

Please contact the Volunteers co-ordinator

Marion Fenton:

07974 063674

or email Marion via:
volunteers

@foxloweartscentre.co.uk

Building Maintenance

Cliff Deighton

07789 362 179

Exhibitions:

Upper Gallery

John Pursaill

07854 948 215

Ground Floor

Pat Bennett

01538 384167

Viv Young

07957 604 599

Films

Maureen Wiskin

01538 385799

Gardens

Alison McCrea

07753 172 564

Health & Safety

David Barnes

01538 388478

Marketing

Marc Briand

07799 175 909

Olivia Kehoe

07425 114 363

Music & Theatre

Andy Norton

07974 063 674

Talks

Erica Brook

01538 528178

Volunteers

Marion Fenton

07938 226 469

Web Site

Alison McCrea

07753 172564

The Foxlowe Arts Centre is a Limited Company by Guarantee: 07757326 and a Registered Charity: 1144382

Minutes of the meetings of the trustees and copies of the trust's annual accounts are available in the box file in the first floor vestibule of the Heritage and William Morris Rooms

March - April 2016

ST13 Foxlowe Arts Centre Newsletter

Issue 38

FREE

ISSN: 2049-7229

LEEK'S GREEN GEM

Leek Historical Society's latest exhibition at the Foxlowe highlights parks history

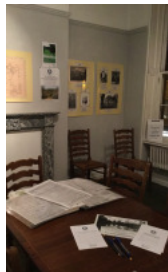
Ideally situated not more than five minutes from the town centre, with at least ten entrances, Brough Park must be visited by hundreds of people each week, all delighting, no doubt, in its landscape and variety, but maybe few reflecting on its inception and creation.

The Leek Historical Society's newly mounted exhibition in the Heritage Room shows through documents and photographs the birth of an idea to the realisation of the concept. It could be argued, considering the number of mills in Leek that it was a 'late arrival', with the first municipal park in England being landscaped possibly as early as 1833, providing a space for everyone, particularly factory workers, to enjoy the restorative qualities of green space and recreation from unhealthy work conditions.

Mill-owner William Spooner Brough (1840-1917) gave ten and a half acres of his Ball Haye Hall estate for use as a public park in 1913. Work was delayed because of the First World War, but resumed after the war with the addition of a further eight and a half acres donated by mill-owner Joseph Tatton. The Park was officially opened in 1924, with the bandstand being built the same year.

W.S Brough was the grandson of John Brough, silk manufacturer of Brough Nicholson and Hall. A man who held wide ranging interests. His wealth enabled him to retire at the early age of 40. He moved to London and for a short period, ran an art shop with Thomas Wardle, through whom he met William Morris, Burne-Jones, Whistler, and other leading members of the Arts and Craft Movement. He was Captain of Leek Fire Brigade, giving Leek its first Fire Station. The avenue of trees lining the Buxton Road, and the land known as The Waste, were his creations. He died at the age of 77 in 1917, so sadly never saw his town park vision realised.

This informative exhibition coincides with the District Council's preparation for a £2m grant from the Heritage Lottery Fund to improve Brough Park.



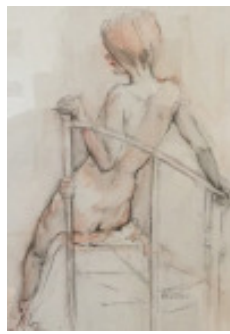
The Man Who Painted The Air He Breathed ERICA BROOK looking forward to the exhibition of Arthur Berry's work, such as has never before been seen in Leek.

Arthur Berry's life was infused by the Potteries, smoked filled, smut splattered landscape, where 'the air was so thick you could chew it'. His stark, pessimistic attitude to human kind lived side by side with a love for the beautiful ugliness he saw around him.



Painter, playwright, poet, writer, observer and translator of the Potteries, its life and people, grim downtrodden, unhealthy people, whom he captured through his work where characters seemed to emerge from grit and grime as he built on layers of cross hatched tertiary colour, creating portraits of careworn faces, with empty gaze, which still invite a desire to empathise.

Watch out for the exhibition being staged October/November, where, at the invitation of Bare Wall Gallery, Burslem, and in conjunction with the Potteries Museum and Art Gallery, Hanley, we will be having an exhibition of Arthur Berry's work, such as has never before been seen in Leek.



Foxlowe Gallery co-ordinator JOHN PURSAILL introduces the OUTLINE ART GROUP showing in the Upper Gallery until Saturday 2nd April

Words cannot well do justice to the vividness and variety displayed by members of the Outline Art Group. Their work includes painting and printmaking, surface design with

textiles and other materials, ceramic sculpture and fine art photography. Their subject matter is even more varied (outlined below and see: www.facebook.com/OutlineArtists). The nine members live on the borders of Staffordshire and Cheshire, and Foxlowe visitors have a chance to meet them all.

Seated Nude watercolour Ann Roach

Foxlowe Upper Gallery

Saturday 27 February 1.30-4pm

Margaret Brothwell: subtle and suggestive still life images with beautiful colours and vanishing outlines, painted in a process that allows change as the work evolves to a final form.

Vicky Christmas: townscapes and buildings delicately drawn by pen with watercolour, contrasting with strongly depicted landscapes and other views painted in richly expressive colours.

Anne Mychalkiw: patterns for textiles and other surfaces, also collages and paintings. Her designs appeal to all age groups: squirrels, hedgehogs and badgers live in forests; riversides come alive with all kinds of creatures. You are invited to enter the scenes and make up your own story.

Saturday 12 March 1.30-4pm

Penny Beutiman: linocut, woodcut and mixed media, with varied textures, showing vivid and lively images of harbours, industry and the remains of working activity. All prints are artist's proofs with only 6 images produced.

Ann Roach: mixed media painting of varied subjects: figures bringing out qualities such as strength, gentleness, vigour or stillness; flowers with expressive colour and shape, and buildings showing glimpses of life with varied mood and atmosphere.

Estella Scholes, painter, printmaker and book maker: largely abstract images drawn from observing how nature reclaims human endeavour, especially in coastal contexts. Her printmaking techniques include collagraph, monoprint and drypoint. Each of her handmade books is unique.

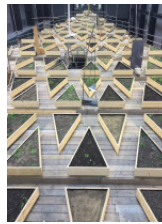
Saturday 19 March 1.30-4pm

Bridget Bowie: passionate about the exploration of paper, stitch and textiles, she creates innovative and unusual works often in response to emotional events. These may be inspired by places, people and significant objects, and by the physical processes involved in the work.

Jan Fox: individual pieces of ceramic sculpture, suitable for the home or garden, whose shapes

suggest rhythm and growth. They look both modern and antique, and are carved before the clay dries.

Ondre Nowakowski: is a distinguished fine art photographer represented in public collections and by large works of public art. His work includes atmospheric pictures of people and places, and striking studies of trees and natural features found on coastlines.



Raised beds for futuristic food production...



...or raised levels of creativity...but where?



See back page.

TREE photograph Ondre Nowakowski left ALMA oils Arthur Berry

